

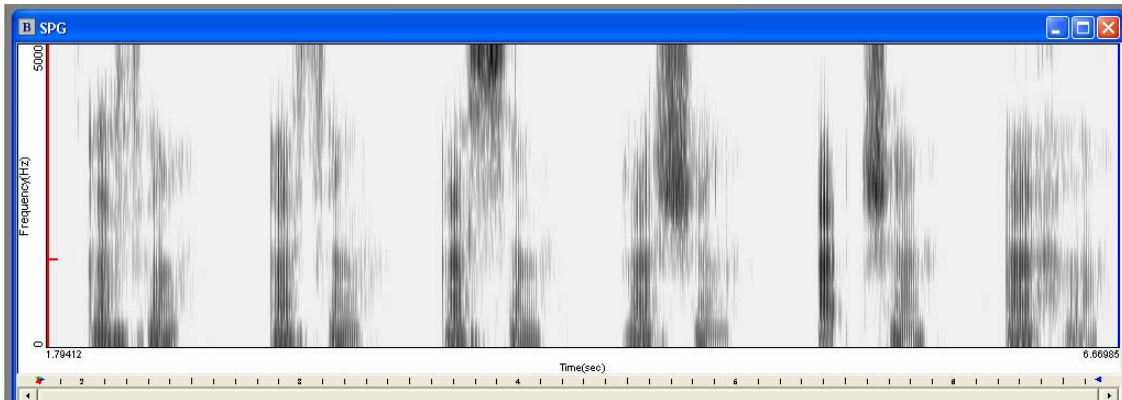
Rules

Assimilation

fat boy	/fæt bɔɪ/ → [fæpbɔɪ]	/t/ → [p] / ____ /b/
good boy	/gʊd bɔɪ/ → [gʊbbɔɪ]	/d/ → [b] / ____ /b/
one boy	/wʌn bɔɪ/ → [wʌmbɔɪ]	/n/ → [m] / ____ /b/
fat girl	/fæt ɡɜ:l/ → [fækɡɜ:l]	/t/ → [k] / ____ /g/
good girl	/gʊd ɡɜ:l/ → [gʊɡɡɜ:l]	/d/ → [g] / ____ /g/
one girl	/wʌn ɡɜ:l/ → [wʌŋɡɜ:l]	/n/ → [ŋ] / ____ /g/

While this describes what is happening, it does not explain it.
In order to explain it, we need distinctive features.

Stridents



Λ f Λ Λ θ Λ Λ s Λ Λ ʃ Λ Λ tʃ Λ Λ h Λ

Which ones look most similar?
Which ones should be grouped together as the same?